



PHILIPS

Professional Lighting

Office

Making the workspace **work for everyone**

Office Lighting Catalog 2016

Let's
work better

“

I think the future of the office will be more about **meeting and talking to people and collaborating.**”

- Babette Bouman, Architect, Fokkema & Partners



Create the “Future Office”

Today, creative visionairs are creating immersive experiences and exploring new ways of using light to alter the way people feel about their surroundings.

The impact of economic, social and environmental factors and an increased awareness of employee wellbeing have driven the need for new kinds of working environments.

Digitization, flexible working, energy efficiency, whatever challenges you face, let our insights from top investors, developers, designers and office building owners inspire you.

Key trends driving today’s changing workplace



Green buildings

More than energy saving

Our increasing demands and finite resources call for a more considered, sustainable and responsible approach to how we do business. As urban growth continues, developers, designers and office building owners inspire you.



Connectivity

Optimizing the office

Technology of a “smart building” supports flexible, wireless working, optimizes employee comfort and productivity and offers energy efficiency and control to owners and tenants.



Health and wellbeing

Good for business

With generations X, Y and Z now co-workers, each with their own different working styles and needs, we look at how workplace comfort can keep people healthy, happy, motivated and productive



Engagement and experience

Flexibility is king

The digital revolution has changed the way we work, bringing with it infinitely more flexibility, choice and opportunity over how, where and when we work.



“ It’s not just about developing energy efficient buildings- **it’s also about how to make buildings efficiently used.**”

- Anna Denell, Sustainability Director, Vasakornen AB

Green buildings

More than **energy saving**

Originating in the US in the 1970’s, green buildings can be defined as having structures and using processes that are environmentally responsible and resource-efficient throughout their lifecycle.

The value of building green



30 - 50%
reduction in energy use*



UP to 16%
increase in asset value



35% decrease
in carbon emissions*



“

Innovation is our highest priority and we want to raise the bar in terms of data analysis, delivering new insights into the use of the office space.”

- Eric Ubels, CIO Deloitte

Connectivity

We are **better connected**

The shift from analogue to digital has completely changed our world over the last 30 years. We now walk round with smartphones in our pockets containing more computing power than that which helped Neil Armstrong set foot on the moon in 1969.

Solutions to challenges



Value

Delivering value beyond illumination



Future proof

System is flexible, future proof and upgradable



Insight through data

Connectivity delivers insights via data to ensure optimization takes place



Comfort and control

Employee comfort and control is increased, whether for closed offices, boardrooms or even open plan spaces



“ The most important thing executives can do is send a very clear message to their employees that they **care about each person’s overall wellbeing.**”

- Tom Rath, Gallup

Health and wellbeing

Good for **business**

It makes perfect sense that if your staff is comfortable in their workplace they will feel motivated and productive, but it’s only in recent times that “health and wellbeing” has emerged as an area of focus for employers – a factor also linked to staff recruitment, retention and job satisfaction.

Comfort and **efficiency**



Up to 25%

Mental function and memory improvement



Up to 12%

Call processing increase



Up to 23%

Productivity increase



“

Some of the best decision and insights come from **hallway and cafeteria discussions, meeting new people and impromptu team meetings.**”

- Marissa Meyer, Yahoo CEO, 2013

Engagement and experience

Flexible workspaces

Organizations know they have to change and adapt to stay competitive. It's the same with workplace environments.

Appropriate spaces



Focusing spaces



Collaborative spaces



Social spaces



Learning spaces



With work space, **lighting too** **has evolved**

Lighting, over the years has evolved into a tool that not only lits up spaces but also helps reduce energy consumption, safeguard resources and provides positive working environment.

Early 20th
century



Mid 20th
century



Late 20th
century



Early 21st
century



Light for work

Efficient and sustainable

- Fixed tasks
- Task oriented
- Strict hierarchy
- No worker empowerment

Light for space

Impactful and innovative

- Open plan offices
- Increase in communications
- Beginning of electronics
- More efficient ways of working
- Task oriented autonomous working

Light for productivity

Higher efficiency

- Computer technology introduced
- Democratization of workplace
- Collaborative working
- Portable communication
- Flexitime

Light for well being

Designed around you

- Workplace efficiency
- Employee health and wellbeing
- Environmental concerns
- Digital connectivity
- Desire for control and choice
- Employee empowerment
- Productivity and efficiency focussed
- Collaborative

Work space beyond illumination

- Healthier and happier workplaces
- Flexibility to employees
- Optimized asset utilization
- Lower installation costs
- Connected system for real time information



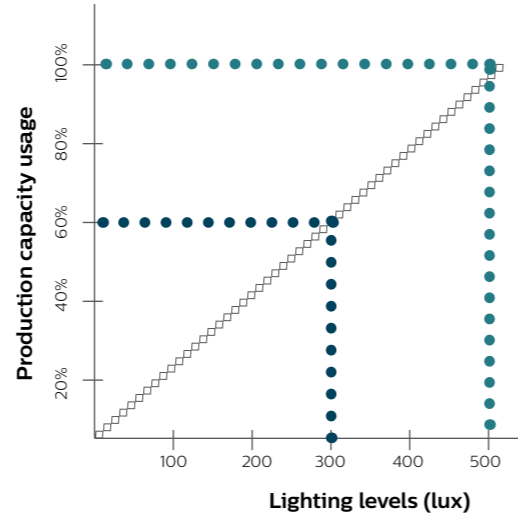
Lighting helps

Improve performance

Quality lighting contributes positively to task performance in terms of higher speed and lower failure rate. It improves, health and wellbeing, increases safety and lowers absenteeism.

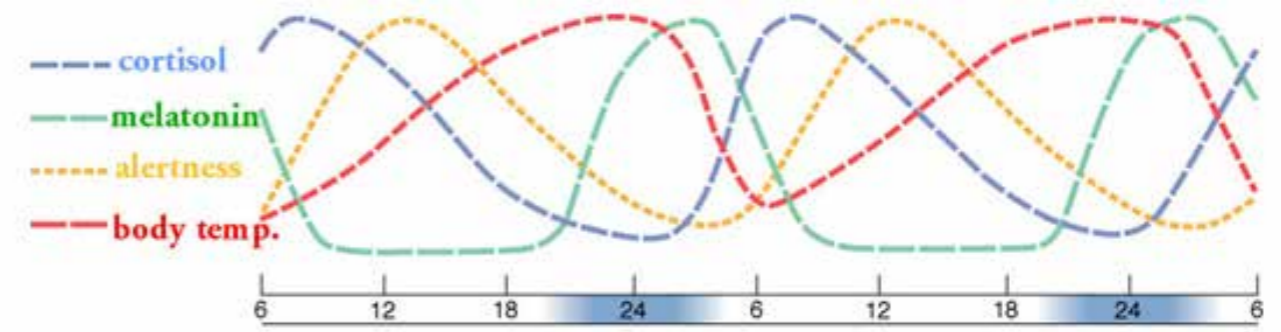
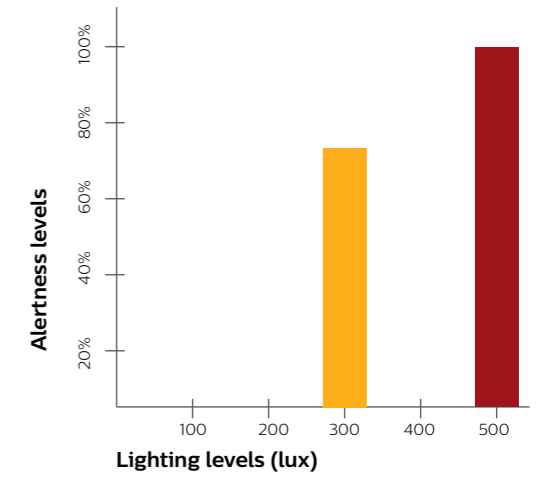
Good lighting can increase productivity by up to 8%*.

The graph depicts increase in lux levels can improve focus and result in higher output



Work as per circadian rhythm

- Light affects biological clock, moods and alertness
- Artificial light has simulating effect on body, same as natural light



Double plot (2 x 24 hrs) of typical circadian rhythms of body temperature, melatonin, cortisol and alertness in humans for a natural 24 hour light/dark.

Create positive working environment

- Motivates people
- Creates inspiring working environment
- Makes the space look attractive
- Provides tidy and clean atmosphere
- Makes work a pleasant activity



Increase safety and comfort

With quality light, many workplace accidents can be prevented. Uniform lighting levels and glare free light prevents employees from getting distracted.

Up to 20%* errors can be reduced with quality light.



*Conditions apply





Philips **leads** the way

Light has a major impact on our wellbeing, moods and emotions. It inspires, attracts, communicates, sets the scene and enhances productivity and comfort in office.

Each year, we at Philips invest heavily in research to gather end-user insights, further deepening our understanding of people's needs, desires and aspirations. Combining these insights with our technological leadership, we are able to deliver meaningful innovations, advanced energy efficient products and systems that are designed around people and are very easy to experience.

We offer a complete portfolio of lighting systems and services for various application areas within an office. From open office areas to meeting rooms and other areas, our range of general lighting, functional lighting and task lighting solutions, meets your need.

State of the art Lighting Innovation Center

The brightest brains in the country work together on the latest technology platforms to develop the most optimized solution for the customer using cutting edge design software and analysis tools. The design centre is equipped with the state of the art measurement, simulation and validation facility to check the designs, prototypes, safety and protection parameters and finally, the finished products at every step, from conceptualisation to delivery.

Designed for Indian conditions, tested at our state of the art Lighting Innovation Center, Noida



Delivering the best performance and quality

Lifetime & reliability

Philips applies best known methods for handling issues associated with thermal management (source lifetime), optics (beam uniformity, quality and output), energy management (high energy efficiency, low power consumption) and ease of installation (contractor friendly) to deliver industry leading results.

Color consistency and light quality

Optibin®, our proprietary production binning optimization process, ensures consistent performance from fixture to fixture. Our strategic relationships with the leading LED source suppliers also give us access to the best LED source binning and source performance. As a result, our LED lighting products generate the truest color and the best light intensity.

Uniform beam quality

Philips' optics expertise gained from over a decade of LED lighting product development enables all our products to deliver uniform beam quality, with no hot spots or unevenness, ensuring optimal light distribution.

Delivery required specifications

By virtue of our close collaboration with standards and regulatory agencies, today we are leading the way to develop and introduce standards for LED lighting products. Our products are tested in accordance with industry standards at accredited laboratories.

Validation and testing

Philips performs extensive validation and environmental testing using accredited facilities to ensure product quality. Rigorous tests include thermal cycling, humidity, and water immersion to verify the functionality and robustness of products under various extreme environmental conditions.

Complete system approach

Philips designs, develops, and manufactures complete system solutions: everything needed to power up and control intelligent LED illumination. This approach assures that the entire system is optimized to work together and meets regulatory compliance as well as provides a high level of flexibility in the system.



Photometry lab

- Biggest Lab in Asia with latest facilities
- Gonio photometer measures the light distribution of luminaires in a 3 dimensional space
- Provides 98% accuracy



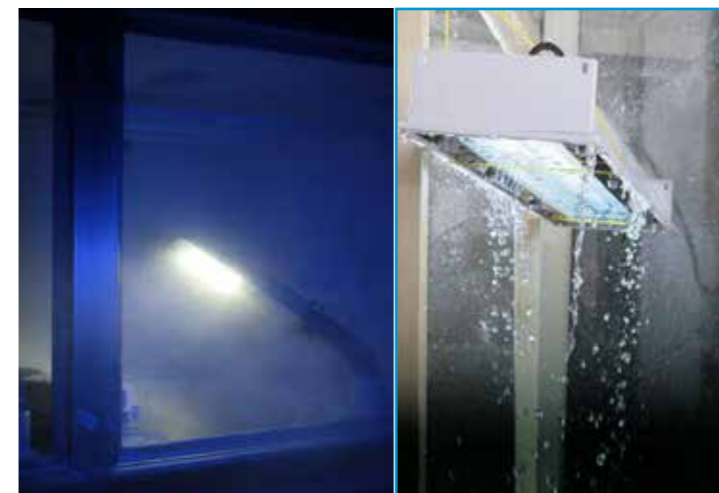
Thermal and electrical lab

- Luminaires tested as per IEC and IS standards
- Fully equipped to conduct all relevant tests.
- Ensures superior product quality



LED drivers and solar charge controller development lab

- Fully equipped for CE compliance testing
- Testing facilities incorporate all IEC standards
- Test facilities and equipments to monitor performance, safety, surge, EMI-EMC, thermal management, solar panel simulators etc.



Dust and water ingress facility

- All products are rigorously tested
- The facility covers entire range of ingress protection and is instrumental for customer acceptance tests.



Creating operational efficiency



Optimized building utilization

Our connected lighting systems can feed occupancy data to building- management systems to allow for optimal control of HVAC.



Real time information on energy use

Data from light points can be integrated with data from other devices like HVAC resulting in useful actionable insights which can lead to increased productivity and space optimization.



Sustainable lighting solutions

Our eco friendly solutions emit less heat and deliver quality light. It helps reduce the load on the environment and provide sustainable work places.



Enhancing Individual and brand experience



Individual lighting control to employees

Our lighting systems can provide individual control to the employees helping them personalize the lighting at their desks.



Right lighting that drives optimum performance

Our lighting solutions are designed in sync with the circadian rhythm which keeps the employees always in positive mood and helps them deliver more.



Adaptable lighting solutions

We offer solutions that are flexible and scalable. These solutions are future ready and can be tuned to changing brand requirements.

Providing the right lighting within offices



Reception areas



Conference rooms



Open offices



Corridors and stairways



Private offices



Touchdown areas



Facade



A memorable first impression from the moment visitors arrive

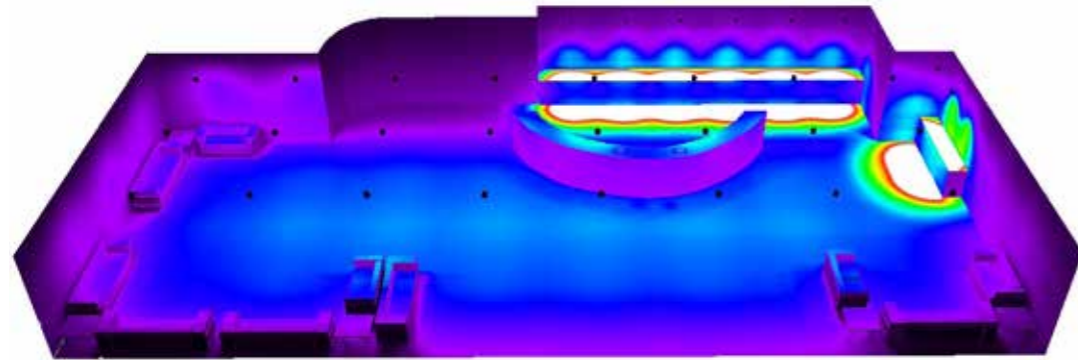
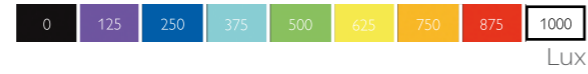
Lighting should help put visitors at ease while communicating the right image for companies.

Our products are designed to create the most dramatic effects, accents, and soft, colorful ambiances. Whether the office design style is funky or functional, we have the right products to set the mood perfectly and enhance the expectations of clients and customers. Lighting also creates the right welcome for staff.

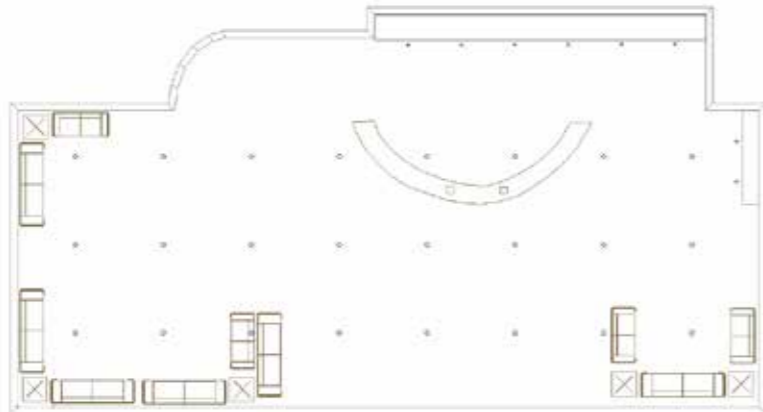
Reception **standard**

Our standard setup uses LED downlights for the general lighting and puts additional focus on the reception desk by using pendant luminaires and a white cove at floor level.

Isolux diagram



Plan view



Recommended luminaires



GreenPerform



Vaya Linear LP

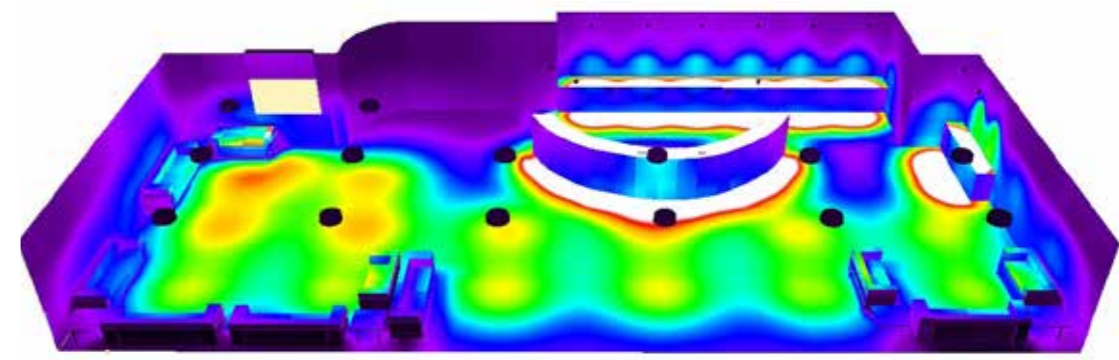
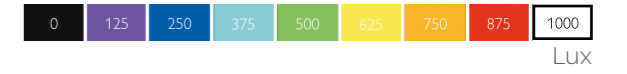


Vaya Linear MP

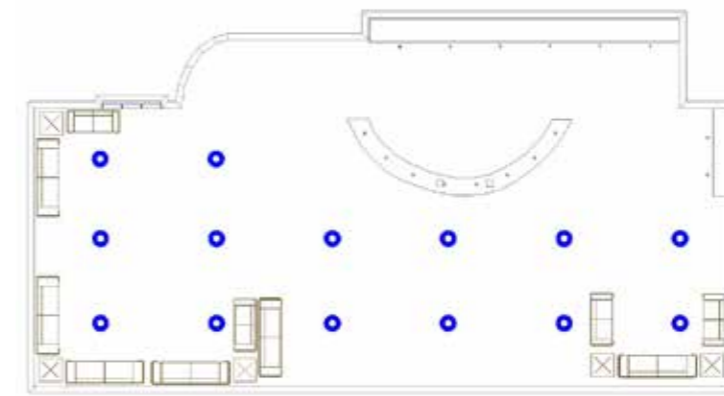
Reception **advanced**

A step on from the standard setup – advanced uses more inspiring luminaires for both general and reception desk lighting. A personal touch and flexibility to change ambience is added by using colored cove lighting.

Isolux diagram



Plan view



Recommended luminaires



Smart Cake



iW Cove MX Powercore

A positive effect on the way people **feel and collaborate**

The lighting in spaces has a profound effect on the way people feel, present and communicate. We bring you lighting that creates spaces with maximum flexibility and comfort to relax or stimulate.

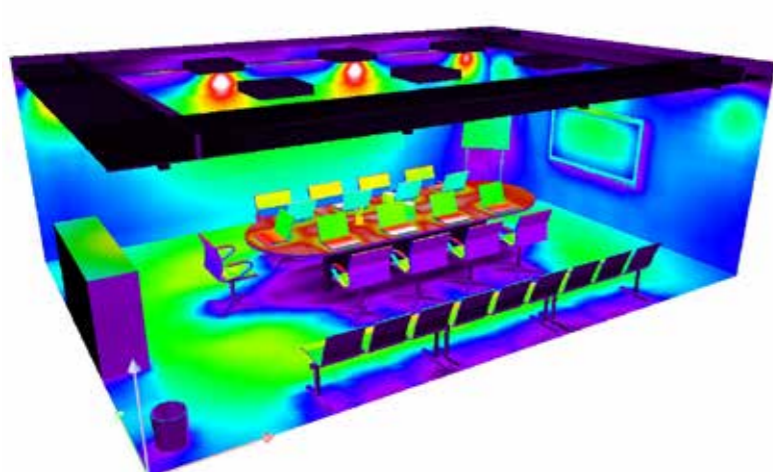
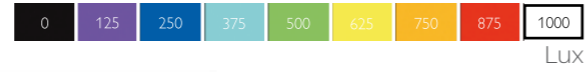
With our solutions, we help you express your creations in the best way envisioned. Clever product features will bring out the best in your conference room designs and in the people who use it.



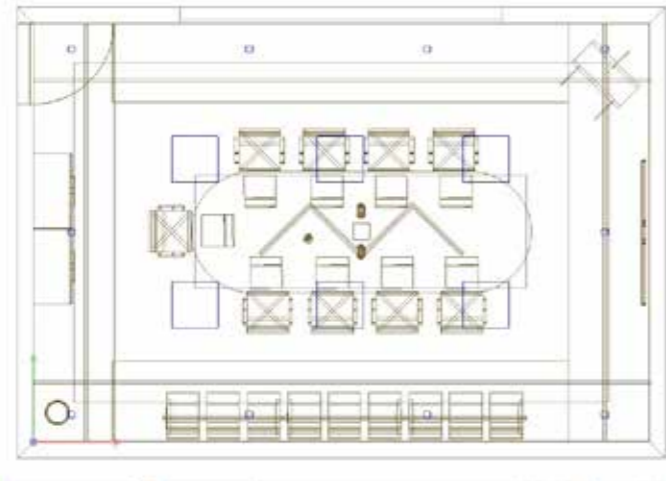
Conference room **standard**

Rectangular pendant luminaires above the meeting table with recessed square luminaires providing the general lighting. White cove lighting is used on the long walls to provide good background lighting.

Isolux diagram



Plan view



Recommended luminaires



GreenPerform

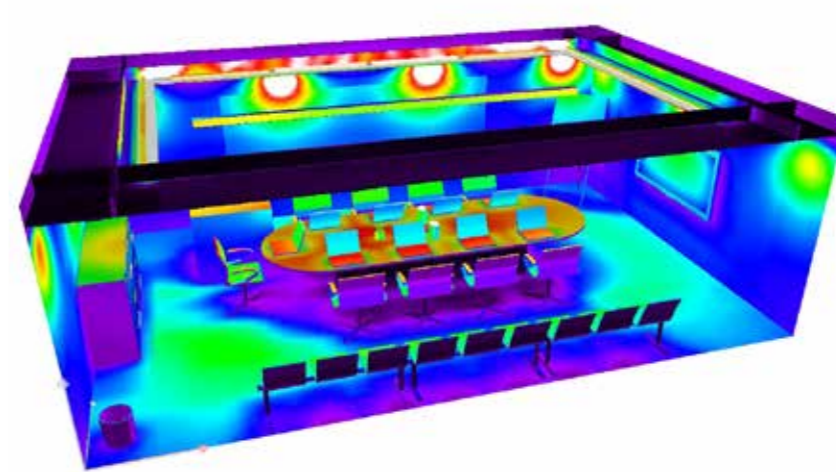
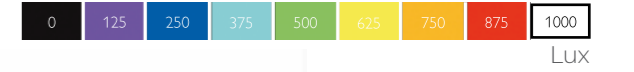


Dayline

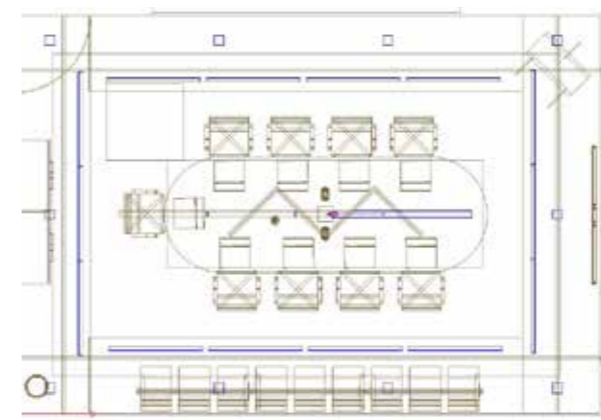
Conference room **advanced**

Advanced uses innovative recessed and pendant luminaires with additional spots to create additional highlights. Instead of white, colored cove lighting has been added to provide more flexibility in scene setting.

Isolux diagram



Plan view



Recommended luminaires



SmartCake



iW Cove MX Powercore



Chopstick



Lighting solutions

Office lighting

Open offices

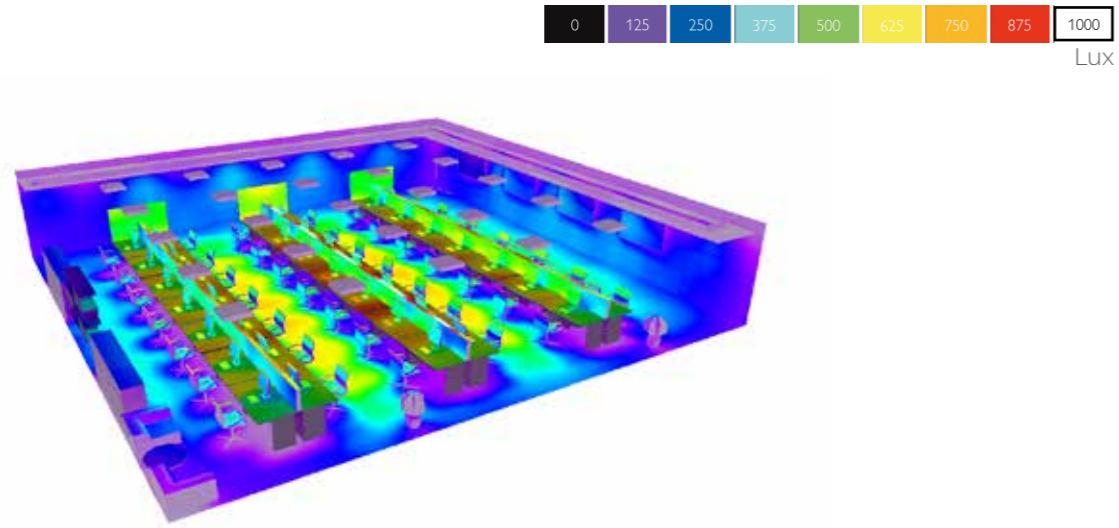
Offices as **open and dynamic** as the people using it.

Our continued effort is to balance comfort and lighting effects that excite and energize. And because we focus on high efficiency, we ensure the energy bills look as good as your spaces.

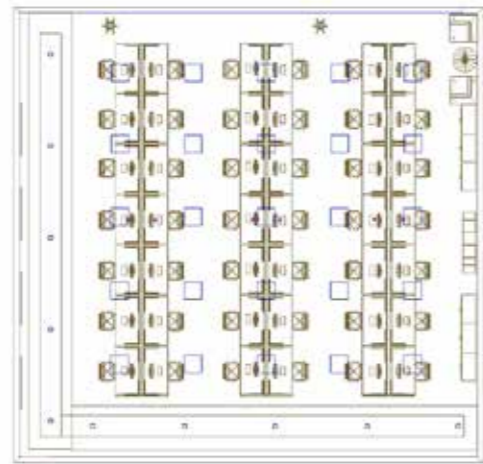
Open office **standard**

Standard office design using efficient office compliant square recessed LED luminaires.

Isolux diagram



Plan view



Recommended luminaires



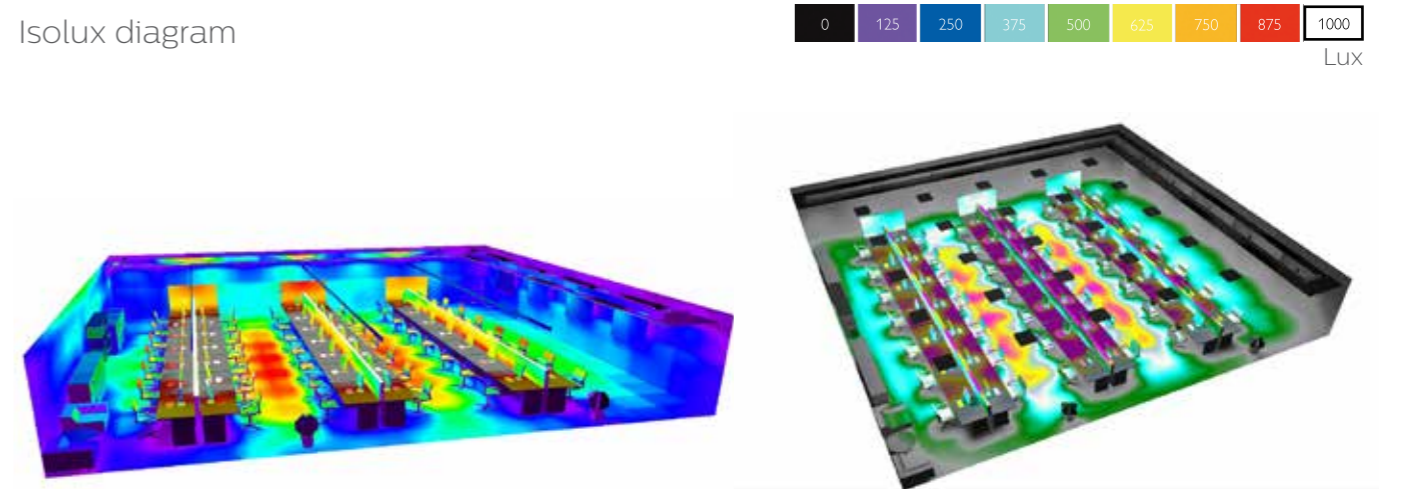
GreenSquare

GreenLED Ultima

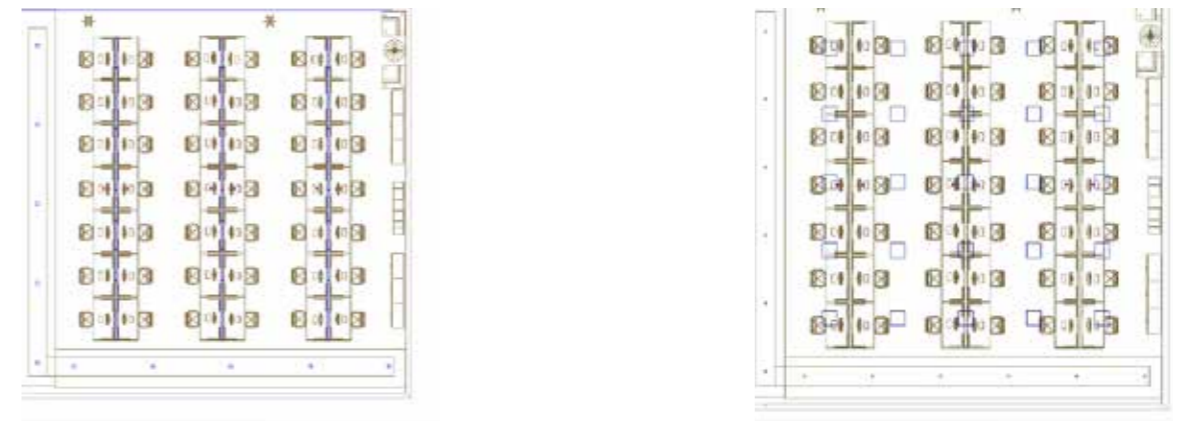
Open office **advanced**

The advanced layout recommends a highly efficient LED recessed luminaire for general illumination with additional desk lighting for added flexibility.

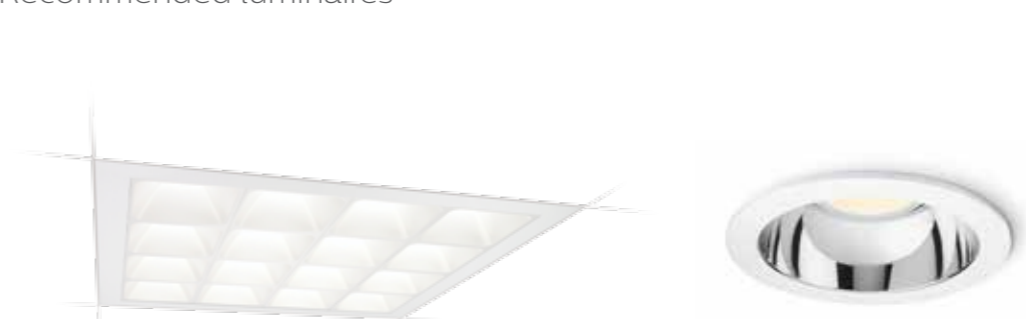
Isolux diagram



Plan view



Recommended luminaires



PowerBalance

LuxSpace

Stairways and corridors that are **a delight to walk down**

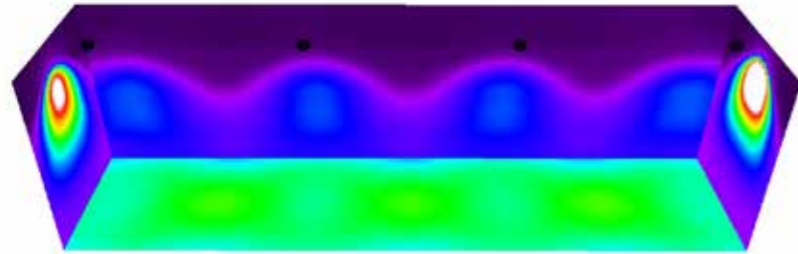
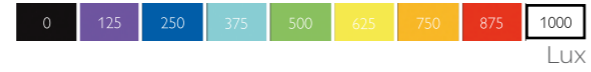
Create uniquely designed passage ways,
corridors and stairways with accent displays
that will bring these spaces to life. Our range of
products give you the freedom to create spaces
that are memorable, safe and stylish.



Corridors and stairways **standard**

Our Standard setup using LED downlights on the central axis of the corridor

Isolux diagram



Plan view



Recommended luminaires

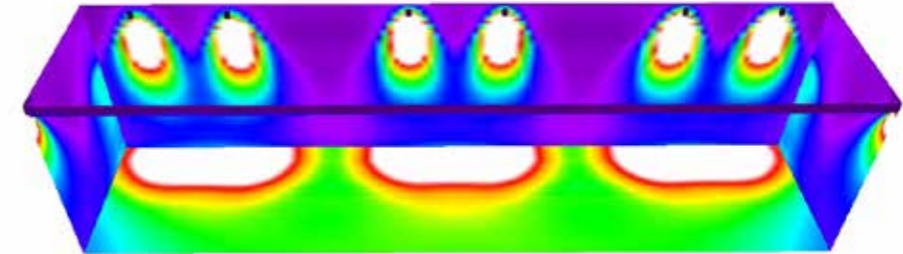
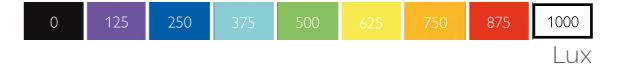


GreenPerform

Corridors and stairways **advanced**

Advanced uses the same principle for general lighting as the standard design but with a more innovative look and feel. Additionally spots have been added to provide accents.

Isolux diagram



Plan view



Recommended luminaires



Smart Lotis



iColor Cove MX Powercore



Lighting solutions

Office lighting

Private offices

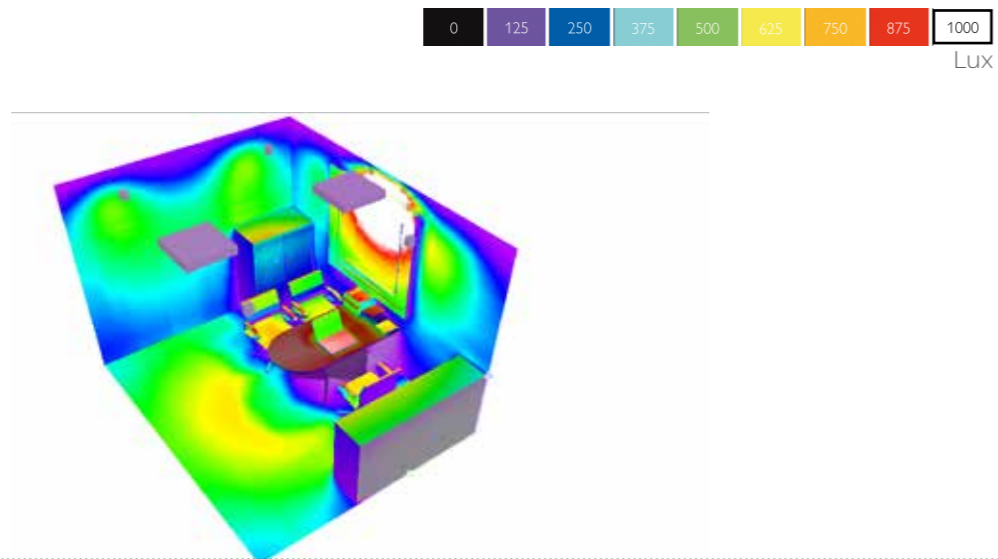
Private offices that are **energizing and productive.**

Our dynamic solutions support office spaces seamlessly. From luminaires that adjust automatically to natural light to lights that turn off when not needed. We help make smart offices even smarter, and private offices more energizing and adaptable for flexible working.

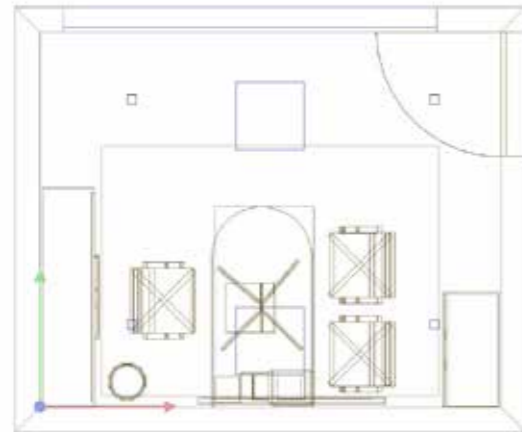
Private office **standard**

The standard design uses four square recessed luminaires to provide functional lighting.

Isolux diagram



Plan view



Recommended luminaires



Dayline

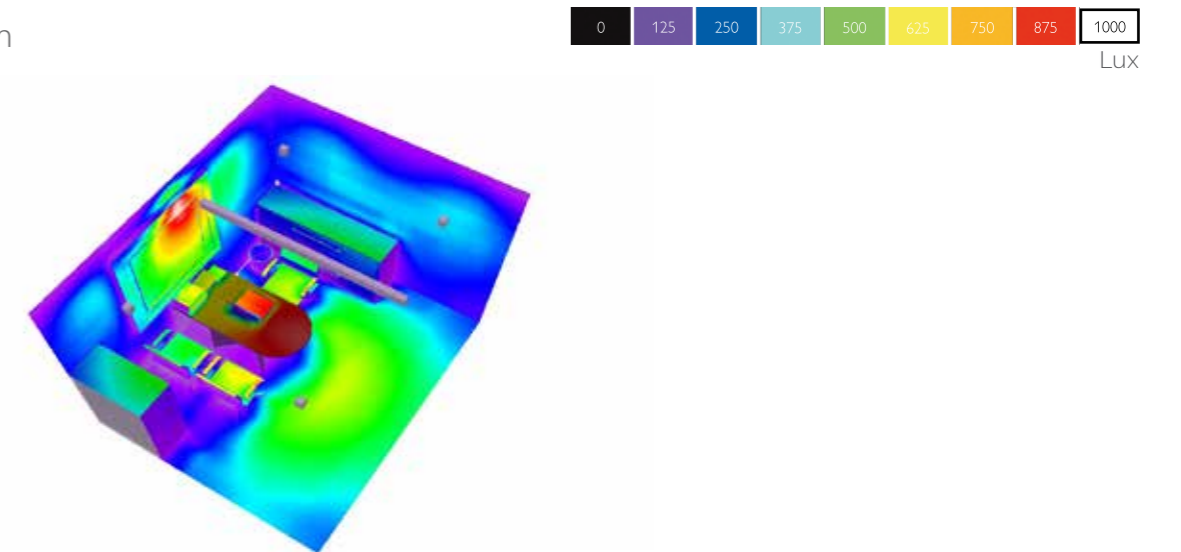


GreenLED Ultima

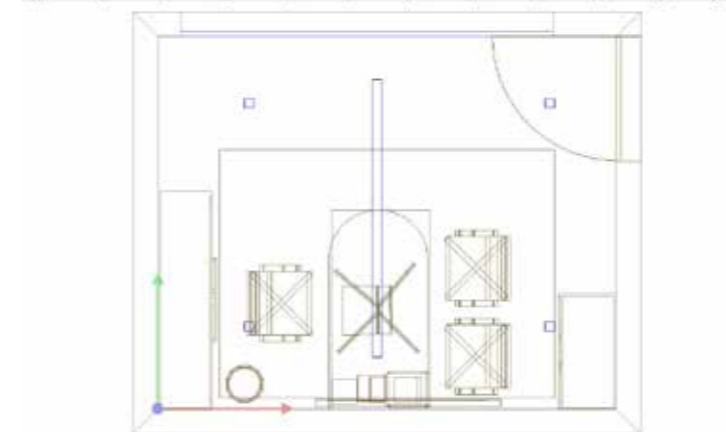
Private office **advanced**

Advanced has the same layout as the standard design, but with more innovative luminaires and a dedicated suspended luminaire for the meeting table.

Isolux diagram



Plan view



Recommended luminaires



LineLight



Smart Lotis



OccuSwitch

Touch- down areas that **inspire and make short stays productive and useful**

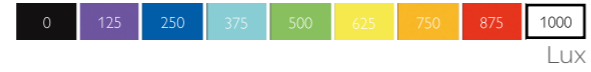
We aid you in making office touch- down areas inspiring and functional. More and more offices have spaces for plug-and-go, laptop focused activities that cater to peak period overflows. We provide the right kind of lighting that help make these spaces defined and productive for short periods of time.



Touch- down areas **standard**

In our standard solution LED downlight is used for both general lighting and more contrast lighting on the seating area. Several small spots have been added to highlight the separation furniture.

Isolux diagram



Plan view



Recommended luminaires



GreenLED Ultima

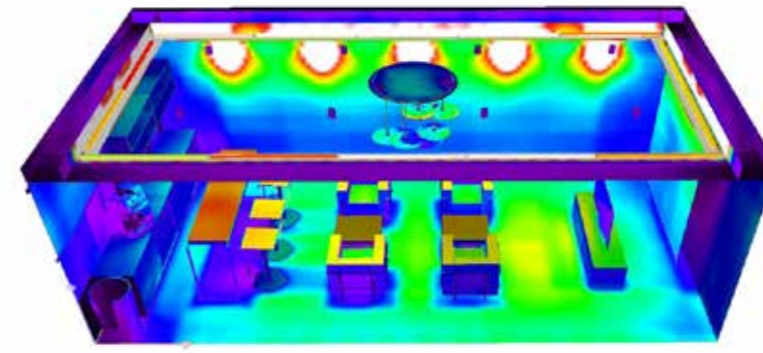
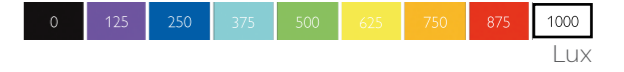


Vaya Cove LP

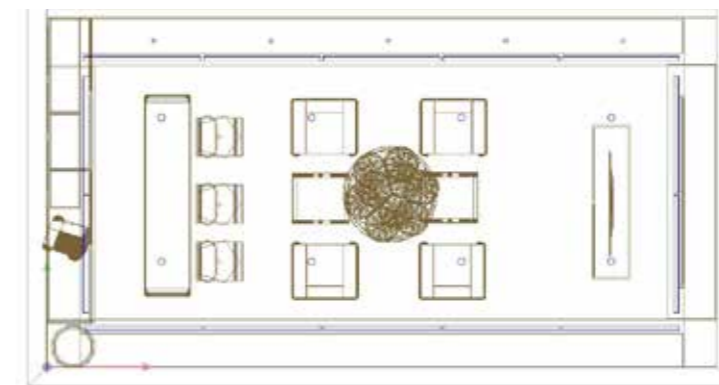
Touch- down areas **advanced**

Advanced uses the same general lighting as our standard design, but with more inspiring elliptical pendant luminaires to light the seating area.

Isolux diagram



Plan view



Recommended luminaires



Smart Lotis



iColor Cove MX Powercore



Hope



Titania



- Lighting solutions
- Office lighting
- Facade**

Lighting solutions that **differentiates your brand**

We offer benefits of LED lighting with flexibility of choosing the right color to highlight your office space

This helps build and differentiate your brand in competitive market.

Recommended products for facades



ColorReach Powercore

Combines all benefits of LED based lighting and control in an elegant fixture specifically designed for large scale installations.



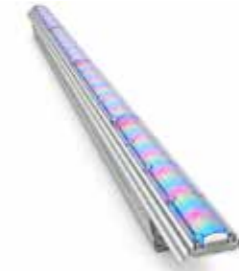
ColorReach Compact Powercore

Outputs thousands of lumens and throws light hundreds of feet, delivering true LED-based illumination for large scale structures.



ColorBlast Powercore

Combines rich, saturated, wall-washing color and color-changing effects with simplified installation.



ColorGrazec EC Powercore

Delivers 241 lumens per foot while consuming just 10 W maximum.



ColorGrazec QLX Powercore

Features outstanding light output at reduced power levels for the right balance between performance and price.



ColorGrazec MX Powercore

Features the most light output in our line of color-changing LED grazing fixtures, for high-intensity multi-storey façade and surface illumination.



ColorBurst Powercore

High-output, exterior-rated LED lighting fixture designed for accent and site lighting.



ColorBurst Compact Powercore

High-output, exterior-rated LED lighting fixture designed for accent and site lighting.

Office Toolkit

Table of Contents

Product	Application	Pg
Chopstick	Open office, Private cabins, Conference room	66
Sereno	Private office, Open office	68
LineLight	Private office, Open office	70
PowerBalance	Open office, Meeting rooms	72
Dayline	Private office, Open office, Conference room	74
FullGlow	Open Office	76
GreenSquare	Open office	78
GreenPerform	Reception, Conference room, Corridor and Breakout area	80
GreenLED Ultima	Open office, Private office, Corridors and Breakout area	82
LuxSpace	Open office	84
OccuSwitch	Private office	86



Chopstick

Chopstick offers small size with big lighting performance and a price point that makes it ideal to use in many different types of spaces.

Balance of light, form and materials

Architects delight

Sleek minimalistic design providing more uniform luminous environments with optimal energy-efficiency.

Super efficient

Chopstick provides superior efficacy of 110 lm/W.

Perfect distribution

Chopstick LED offers a semi-indirect lighting distribution ideal for open environments and smaller private spaces. High efficacy and high peak zenith distribution results in the ability to spread distance between fixtures.

Key features

- Wide-spread lighting distribution
- Efficacy up to 108lm/W
- Available in 4ft and 8ft modules

Technical specifications

Type	Chopstick
System Wattage (W)	47,32
IP rating	IP20
Lumen Output (lm)	4800, 3400
System Efficacy (lm/W)	110
Color Temperature (K)	3000, 3500, 4000
CRI	>80
Housing	Metallic CRCA powder coated
Cover	20 gauge cold-rolled steel precision formed
Mounting	Suspended, Wall
THD	<10
PF	>0.9
Operating Voltage	220-240V , 50 / 60 Hz





Sereno

Philips Sereno, a range of office luminaires with a wide range of optics specially designed to meet the highest standard of work place lighting. Sereno luminaires offer the latest technology for high comfort and optical efficiency in a miniature profile. Sereno is available in surface/suspended and wall mounted versions in a variety of dedicated optics such as D8 Mirrors, Opal Diffuser and indirect optics. Sereno offers the best combination of performance, energy efficiency, aesthetics and flexibility of designing.

Balance of light, form and materials

Office standard compliant

Sereno LED is an office standard compliant LED luminaire with UGR<19

Best in class LPD

With high Light Power Density, this luminaire provides high levels of energy efficiency.

Superior visual comfort

This luminaire helps increase productivity with its superior visual comfort lighting.

Key features

- Energy efficient
- Ultra flat light with only 47mm in height
- Maintenance friendly

Technical specifications

Type	Sereno
System Wattage (W)	28
IP rating	IP20
Lumen Output (lm)	3000
System Efficacy (lm/W)	>105
Color Temperature (K)	4000, 5000
CRI	>80
Housing	Extruded aluminum housing
Cover	CRCA front frame with high efficiency PMMA diffuser
Mounting	Suspended, Wall
THD	<10
PF	>0.9
Operating Voltage	220-240V , 50 / 60 Hz



Applications

- Open office
- Private Cabin
- Conference room



LineLight

LineLight lighting solution is linear lighting solution suitable for use in variety of Indoor applications. It's sleek design, elegant looks complement any interior architecture and visual effect. LineLight offers the unique flexibility of continuous mounting or standalone mounting in lengths of 4ft and 8ft.

Sleek and elegant

Continuous mounting

Extruded aluminium housing for continuous mounting ensures no sagging.

Driving performance beyond the edge

LineLight delivers high performance and a quality light output.

Perfect distribution curve

LineLight offers the best continuous linear lighting providing unparalleled distribution & brightness to create a balanced luminous environment, with smooth & even gradients of light through out the space.

Key features

- Comes in 4ft and 8ft modules
- Maintenance free
- Eco friendly

Technical specifications

Type	RC 311 LED 22S 4000 / 6500 PSU OD GR / WH
System Wattage (W)	28
IP Rating	IP20
Lumen Output (lm)	2200
System Efficacy (lm/W)	80
Color Temperature (K)	4000, 6500
CRI	>80
Housing	White/ Grey
Cover	PMMA
Mounting	Recessed
THD	<10
PF	>0.9
Operating Voltage	170 – 270 V





Best in class visual comfort

Smart Pyramid Optics - UGR<19

The luminaire offers low direct glare which results in enhance visual comfort

Low indirect Glare

The luminaire provides luminance below the angle of 65°, thereby reducing indirect glare in an office environment.

High color rendering

With CRI>80, the luminaire renders color naturally and makes people comfortable.

Key features

- Highly efficient, efficacy >90 lm/W
- Compact look and feel
- Premium material and finish

Technical specifications

Type	RC360B
System Wattage (W)	29
IP Rating	IP20
Lumen Output (lm)	3400
System Efficacy (lm/W)	115
Color Temperature (K)	4000
CRI	>80
Housing	Powder Coated Steel
Cover	Plastic
Mounting	Recessed
THD	<10
PF	>0.95
Operating Voltage	220V-240V/50, 60Hz

PowerBalance

PowerBalance is Philips' most energy-efficient office specification compliant LED luminaire. It more than halves energy costs compared to a high efficiency T5 solution, and the LED system has a longer lifetime. This results in significantly lower operational costs, ensuring a payback that meets the needs of the specification market.



Applications
 Open office
 Meeting room



Dayline

Dayline is an efficient luminaire which saves up to 65%* energy as compared to 2 x PLL 36W luminaire. It ensures long, maintenance free life and comes with DALI dimming options. Dayline is a perfect combination of innovative design and efficient LED technology.

Efficient lighting. More Savings

High energy savings

Dayline offers high energy savings up to 65%*.

High lumen efficacy

With efficacy of up to 100 lm/W, the luminaire is highly efficient.

No maintenance

With Dayline, operational costs are reduced as it requires no maintenance.

Key features

- High quality light, CRI=80
- Long life of up to 50,000 hours
- Soft opal diffuser provides high visual comfort
- Eco friendly

Technical specifications

Type	RC240B LED
System Wattage (W)	30, 42
IP Rating	IP20
Lumen Output (lm)	3000, 3600
System Efficacy (lm/W)	up to 100
Color Temperature (K)	3500, 4000
CRI	80
Housing	Polyester power coated
Cover	Acrylic
Mounting	Recessed
THD	<10%
PF	>0.9
Operating Voltage	220-240V , 50 / 60 Hz



- Applications
- Private office
 - Open office
 - Private office

*Conditions apply



Inspiring and efficient

Very high efficacy

Efficacy of >95 Lm/watt ensures maximum savings.

Tailored to suit different needs

This luminaire comes in two versions, standard and high efficiency, offering flexibility for varied application.

EMC & EMI compliant drivers

EMC ensures that operation does not influence the electromagnetic environment to the extent that the functions of other devices and systems are adversely affected.

Key features

- 50%* energy savings
- High quality light, CRI=80
- No maintenance

Technical specifications

Type	FullGlow (Standard)	FullGlow (High efficiency)
System Wattage (W)	29	38
IP Rating	IP20	IP20
Lumen Output (lm)	2800	3500
System Efficacy (lm/W)	>90	>90
Color Temperature (K)	4000,6500	4000,6500
CRI	80	80
Housing	Metallic CRCA powder coated	Metallic CRCA powder coated
Cover	Acrylic	Acrylic
Mounting	Recessed	Recessed
THD	<10%	<10%
PF	>0.9	>0.9
Operating Voltage	220-240V , 50 / 60 Hz	220-240V , 50 / 60 Hz

FullGlow

FullGlow is a beautifully designed luminaire which is bound to delight the occupants with refreshing and comfortable experience through its pure form and glare-free light. It comes in two versions - standard and high efficiency. With up to 50%* energy savings and maintenance free operation, this product is an owner's delight.



Applications
.....
Open office
.....



GreenSquare

Green Square provides an optimum visual environment for office work. It provides the right light levels to see printed, handwritten or on-screen documents clearly, without causing glare and fatigue. By providing uniform illumination and having no significant light depreciation over time, GreenSquare ensures enhanced productivity in your office for years together with a refreshing and comforting experience.

Affordable and reliable

Attractive payback period

GreenSquare recovers its cost in a very short period of time. Overall TCO is low.

Easy to install

It replaces conventional 2x2 luminaires with ease as no separate structure/renovation in ceiling is required.

Elegant ceiling look

GreenSquare give the ceiling an aesthetically enhanced look.

Key features

- 40%* energy saving
- Maintenance free
- Long life of 40000 hours*

Technical specifications

Type	GreenSquare
System Wattage (W)	38
IP Rating	IP20
Lumen Output (lm)	2900
System Efficacy (lm/W)	75
Color Temperature (K)	4000,6500
CRI	80
Housing	Metallic CRCA powder coated
Cover	Acrylic
Mounting	Recessed
THD	<10%
PF	>0.9
Operating Voltage	220-240V , 50 / 60 Hz



Applications

Open office



GreenPerform

GreenPerform is an innovative lighting solution which offers a wide range of dimming options for workplaces. The product has options in all variants and all types of dimming solutions like Phase -Cut, Analog and DALI. It offers inherent benefits of LED products such as high energy saving of up to 50% and up to 5 time more life. The range is available from 600 lumens to 2000 lumens making it an efficient and high performance option.

Performance and advanced controls

Exhaustive range with dimming both Analog and Phase cut

The range of products offer varied dimming solutions like Analog, Phase-cut and DALI. The product range is available in various dimensions and lumen outputs with advanced controls.

High Efficiency with more than 85 lm/W

The range helps in saving upto 50% energy and up to 5 times more life over CFL downlighters making it an efficient solution with high performance.

Longer life with 50K hours

With higher efficiency and energy saving the GreenPerform also results into a longer life with up to 50,000 hours.

Key features

- 50%* energy savings
- No maintenance
- Eco friendly

Technical specifications

Type	GreenLEDi
System Wattage (W)	7.5, 11.5, 14.5, 17, 24
IP Rating	IP20
Lumen Output (lm)	600, 1000, 1200, 1600, 2100
System Efficacy (lm/W)	>85
Color Temperature (K)	3000, 4000, 6500
CRI	>80
Housing	Heat sink: PDC-Al, Reflector: PC and Clip: SS Spring
Cover	High Efficiency diffuser with more than 85% transmittance
Mounting	Recessed
THD	<20%
PF	>0.9
Operating Voltage	220V-240V/50, 60Hz





GreenLED Ultima

Green LED Ultima is a slim downlighter with high lumen efficacy of 100 lm/W. It displays true colors with its high color rendering index of 80 and has a long life of 40000 hours.

Performance in slim design

Slim aesthetic design

Ultima adds aesthetics to the space with its slim lip design.

Ultimate performance

High efficiency (100 lm / w) leading to best in class savings over conventional CFL downlight.

Display true color

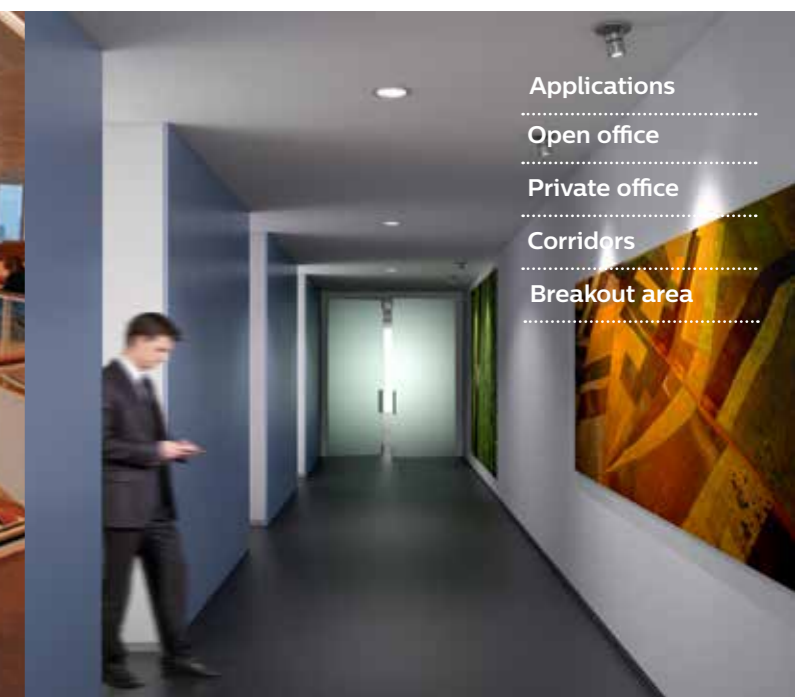
Powered with DuraMAX technology, Ultima gives durable brightness enriching true color of merchandise.

Key features

- Long life of 40000* hours
- High quality light, CRI=80
- Eco friendly

Technical specifications

Type	GreenLED Ultima
System Wattage (W)	6.5, 10
IP Rating	IP20
Lumen Output (lm)	600,1000
System Efficacy (lm/W)	up to 100
Color Temperature (K)	3000, 4000, 6500
CRI	>80
Housing	Plastic body, reflector PC, steel clips
Cover	High quality diffuser
Mounting	Recessed
THD	<20%
PF	>0.9
Operating Voltage	220V-240V/50, 60Hz



- Applications
- Open office
- Private office
- Corridors
- Breakout area



LuxSpace

LuxSpace provides the perfect combination of efficiency, light comfort and design, without compromising on lighting performance. It offers a wide choice of options for creating the desired ambience.

High efficiency, visual comfort and a stylish design

High system efficacy

LuxSpace delivers high system efficacy of 100 lm/W.

Low UGR

It has a UGR < 19 resulting in no direct glare in an installation.

Long life class

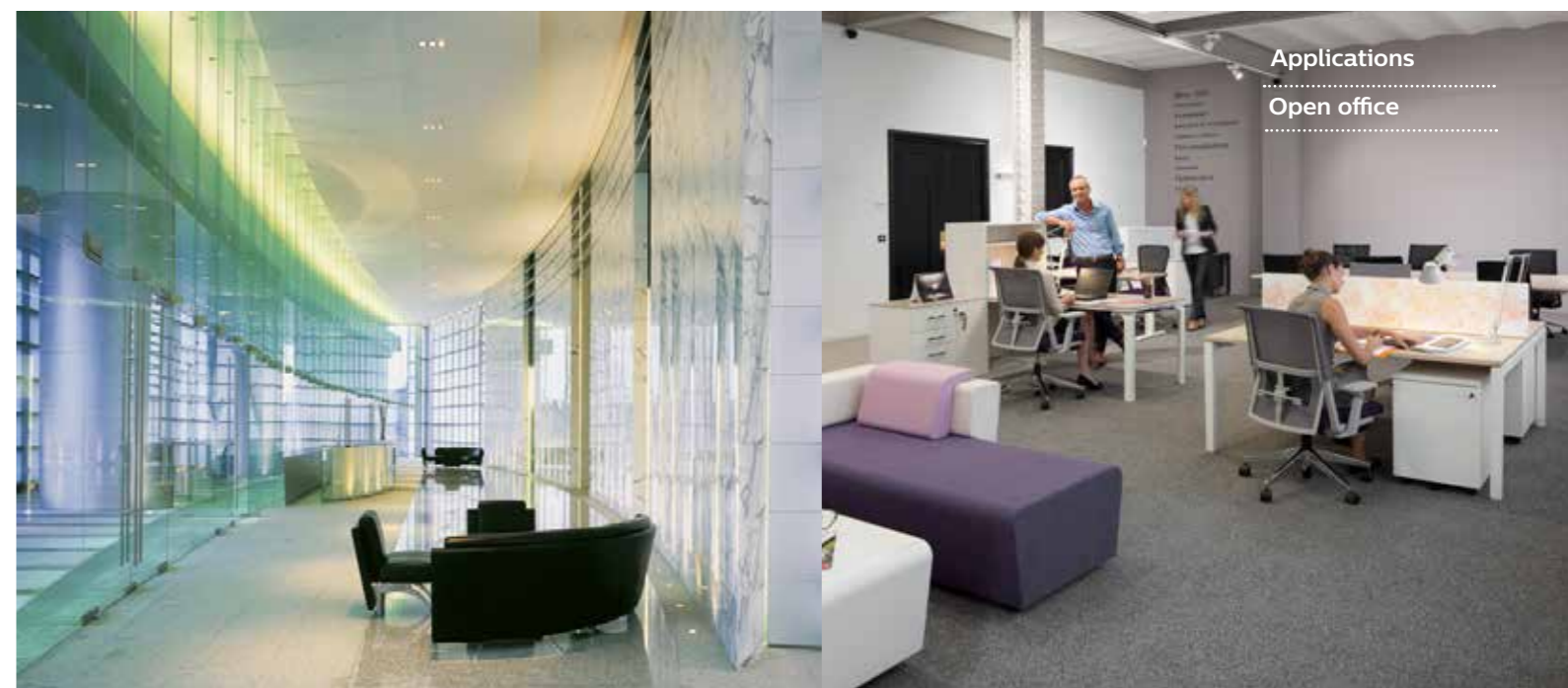
LuxSpace offers a compact look and feel and a perfect fit with easy installation, with a long lifetime of 50,000* hours.

Key features

- Highly efficient, efficacy >90 lm/W
- Compact look and feel
- Premium material and finish

Technical specifications

Type	BBS478, BBS488/489, BBS498/499, BBS496
System Wattage (W)	8, 13, 28, 40.5
IP Rating	IP20
Lumen Output (lm)	600, 1000, 1500, 2000, 3000
System Efficacy (lm/W)	>90
Color Temperature (K)	3000, 4000
CRI	>80
Housing	Steel and polycarbonate
Cover	Option of various attachments
Mounting	Recessed
THD	<20%
PF	>0.9
Operating Voltage	220V-240V/50, 60Hz





Smart, efficient and reliable

Plug and play

OccuSwitch offers a single function occupancy control. It is very easy to install and can be applied without any commissioning.

Smart savings

Energy consumption based upon actual usage instead of connected load. It offers good pay-back scenario with savings up to 30%.

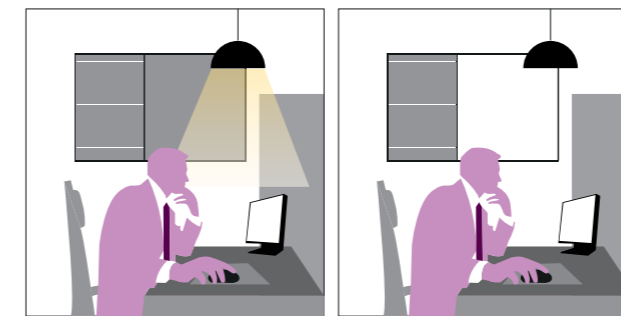
Daylight Harvesting

Inbuilt photocell sensor to switch off lights when desired lighting levels are available through daylight

Key features

- Automatic control
- Daylight override and switching
- Smart timer

Daylight sensing



Occupancy sensing



OccuSwitch

OccuSwitch is a movement detector with a build-in switch. It will switch off the lights in a room or area when it is vacant and thus save energy. OccuSwitch can switch any load up to 6 A and control an office area of around 20Sqm for small movement (e.g. desk work) and around 50Sqm for large movement (e.g. walking). Its smart daylight sensing technology offers additional saving through daylight override and daylight switching.



Lighting **Systems**

Exactly the right
illumination experience

Lighting systems from Philips help people feel comfortable, productive, and safe. They beautify spaces and transform environments. Our lighting systems combine world-class traditional and LED luminaires with analog and digital controls that let you deliver exactly the right illumination experiences, whenever and wherever you need them.

Transforming your goals into effective lighting application

As leaders in the LED technology revolution, we create lighting systems that prioritize energy efficiency, sustainability, and operational cost reduction. We focus on improving the livability and effectiveness of indoor and outdoor environments, providing everything from functional general illumination to spectacular color-changing experiences that enhance your brand, encourage social interactions, and revitalize communities.

At Philips, we have the deep expertise and range of systems to transform your goals into effective lighting applications. You can count on us to understand your goals, and to help you specify and execute flawless solutions that ensure ideal lighting for your specific lighting needs.



Save energy

With LED based systems and controls



Reduce costs

Use highly energy efficient lighting, only when and where it's needed



Adjust ambience

Influence mood, create the best customer experience



Soothe and energize

Create an enhanced healing environment, make people feel at home



Enhance your brand

Gorgeous lighting has the power to make your brand sparkle



Transform environments

with dynamic, controllable color, white and full-spectrum light



Create spectacle

Astonish and surprise with large scale, color changing light shows



Support productivity

Boost vitality, promote well-being, and improve performance with light



Beautify cities

Beautifully illuminate facades, monuments, bridges and roads



Streamline operations

Timeline and rules based schedules adjust light levels and change scenes automatically

Optimizing the office space

With information managed by the lighting system, you can give your employees the right to control their “Right Light” at their work areas to suit their individual preferences. By enhancing light quality and comfort, and by giving employees more control over their environment, lighting systems can help make your workplace more pleasing and more productive.



Deeper insight for more effective management

In a connected lighting system, intelligent luminaires merge with a facility’s IT and power infrastructures. Because lighting is installed virtually everywhere that people go, the lighting system can serve as a pervasive data communications platform.



Your building, their way

Office workers can control the lighting at their specific work areas to suit their individual preferences, even in open-plan offices. By enhancing light quality and comfort, and by giving workers more control over their environment, connected lighting systems can help make your workplace more pleasing and more productive.



Lighting works better when it plays well with others

Philips connected lighting systems can integrate with building automation systems and other systems in a facility. Lighting management becomes one aspect of a system that includes other important services—including HVAC, maintenance, daylighting, environmental and chemical monitoring and compliance.



Lighting the way to a better day

Light and circadian rhythms, the “built-in clocks” govern our cycles of sleep and waking up, stimulation and relaxation. Well designed lighting experiences can have a positive effect on concentration, relaxation, sleep patterns, and the overall feeling of health and well-being.

With timeline based control systems from Philips, you can make your office the ideal place to think, create, and collaborate.



The right level of light, when and where you need it

With simple to sophisticated controls, Philips lighting systems can target lighting for different applications in different zones or areas of your business. Scene setting and timeline based dimming schedules give you a straight forward and flexible way to ensure the optimal lighting experiences in every application area.

Connected lighting system beyond illumination

Imagine a world of beautifully illuminated indoor and outdoor spaces, where every light point is connected to an intelligent system that delivers high quality, reliable illumination and that serves as a pathway for information and services to deliver extraordinary value beyond illumination to the users and managers of spaces.

Philips connected lighting system deliver value beyond illumination turning the lighting points into intelligent source of information

What makes lighting system connected



Connected luminaires

Luminaires are uniquely identified and seamlessly integrated into the IT network in a building or city and share information about their status and operations.



Connected spaces

Outfitted with integrated sensors, each luminaire becomes a point of intelligence that can share information on occupancy, activity patterns, changes in temperature or humidity and daylight levels.



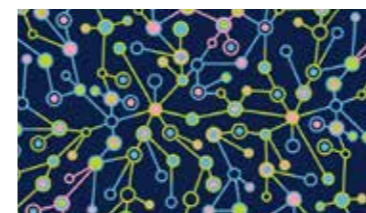
Connected people

By integrating wireless communications into the lighting system, you can deliver location based services and in context information via mobile apps to people in illuminated spaces.



Connected software

With our sophisticated lighting management software, operators of spaces can monitor and manage the lighting system in real time. You can store, visualize and analyze historical information about luminaire performance.



Connected landscape

Connected lighting systems can integrate with other systems in a building or a city, creating new synergies and efficiencies and making lighting an integral part of the new digital ecology.

Lighting **Services**

Value **beyond illumination**

New lighting technology combined with lighting controls is much more energy efficient than traditional lighting. It can also contribute to your business performance and success in more ways than you might imagine. Today's top lighting technology can increase operational efficiency, reduce seat cost/ employee through space optimization in an office environment, increase foot fall through enhanced shopper experience in retail, make a building or brand stand out of the crowd, expand an entertainment venue's source of revenue, and even help the healing process for patients in hospitals. With Philips Lighting as your partner, you can easily start benefiting from the dramatic difference that lighting can make. Upfront capital investment on your part may not even be necessary.



End to end Solution Partner

We at Philips Lighting believe in providing a solution rather than a product and that is why we make business- effective lighting solution, a simple and streamlined process for our customers. Your industry segments' needs are extremely familiar to us, so you can count on us to reliably deliver or help coordinate any- or all- parts of the lighting solution you want, from concept design and detailed audit to complete lifecycle services. When you partner with Philips Lighting as an end to end solution partner, you're assured of results that give you maximum business impact and a committed lighting quality with minimum hassle and risk.

We focus on total value of ownership for our customers through this engagement and how we maximize this over the complete lifecycle. This effectively addresses a variety of business needs in terms of operational efficiency, sustainability, enhanced safety, increased revenue and shopper experience. A capable solution partner would derive value out of customized solution for specific requirements, optimizing the lighting design and focusing on benefits that go beyond illumination.

Delivering the agreed business benefits across the lifecycle of the delivered solution warrants a strong service commitment and a process driven approach to maximize the ROI and also enhance the life of your lighting asset deferring your CAPEX investment. That is why we at Philips Lighting have defined a suite of service offerings to complement and support your lighting investment.

Philips Lighting representatives are available whenever you need them to make sure your solution performs as expected.

A trusted partner to give you peace of mind

We listen and understand your needs



Global presence and local experience delivering multi-tiered support

The next competitor is half of Philips size.



World-class innovation capabilities and deep application and system expertise
We have 12000 Patents



One-stop shop: solutions and services across the lighting value chain



Proven record of quality and reliability– no unpleasant surprises

Products designed for unique & demanding power conditions

Range of value-adding services

Choose the combination of services you need



Professional

Lighting audit, solution design



Lifecycle

Maintenance, asset management



Managed

Plan, build, finance, operate and maintain



Project

Implementation, testing and commissioning

Benefits for customer

Recommendation for improvement

Optimized & efficient solution design

Extension and availability of lighting installation

Operation and performance guaranteed

EMI/rental financial model available.

Quick, efficient and minimal disruption installation

Professional Services

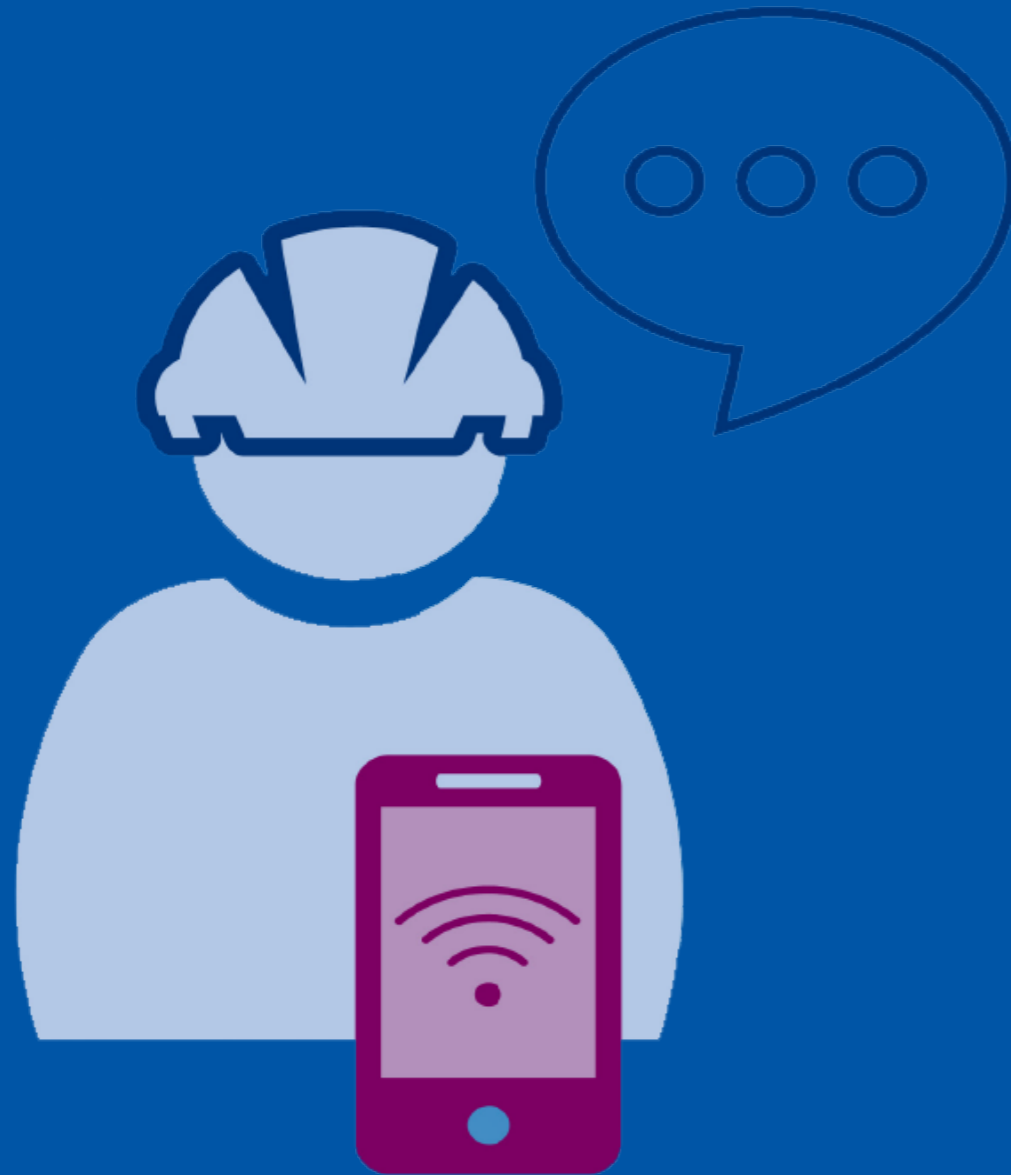


A lighting service that fits your business needs:

- Lighting audit
- Energy audit
- Solution design
- Training services

Lighting audit	Energy audit	Solution design	Training services
<ul style="list-style-type: none">• Age, condition and quantity of existing light fixtures• Manufacturer and model number• Wattage, type and model• Electrical infrastructure• End-user usage understanding	<ul style="list-style-type: none">• Existing energy usage and expenditure• Energy-saving strategies that work best• System evaluation and interview with facility stakeholders	<ul style="list-style-type: none">• Application choice• Detailed lighting design• Visualizations, customizations and mock up• Lamps, luminaires, controls etc	<ul style="list-style-type: none">• Application training• New lighting technology• Control systems• Service engineer trainings

Lifecycle Services



Choose the combination you need

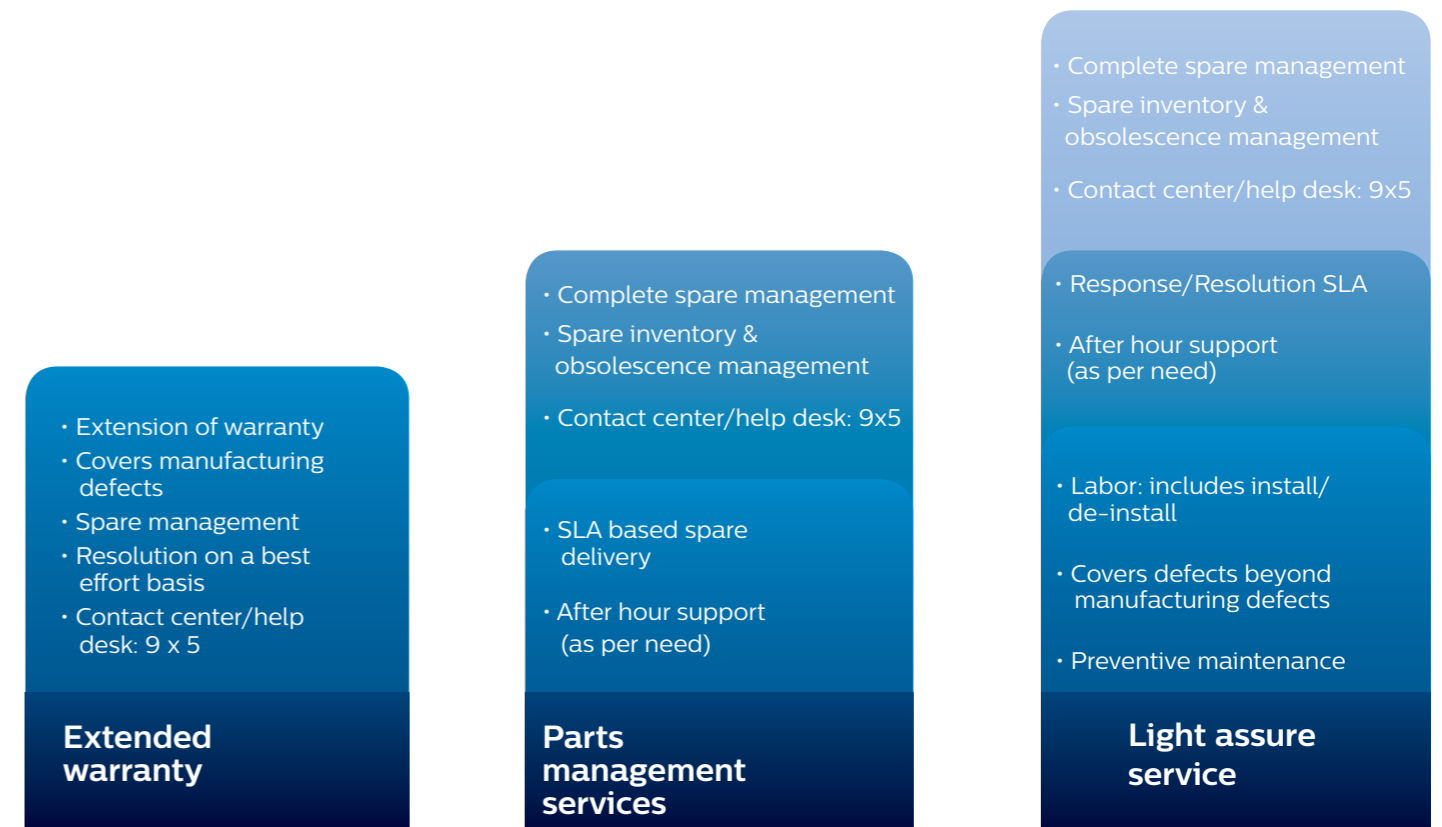
We support you in different ways:

If you have your own technical department or a trusted maintenance partner

- **We provide remote diagnostics and parts replacement**

If you have an outsource strategy, so that you can focus on your core activity

- **We take care of your lighting assets**



Managed Services



Light as a service and circular economy benefits

Operation and performance guaranteed by Philips:

- Plan
- Build
- Finance
- Operate
- Maintain
- Upgrade/ reuse



Unique business model with compelling financing solutions including rental/ lease or deferred payment model



High savings on energy and maintenance costs.

Benefits beyond illumination



Performance based managed lighting solution and service



Taking responsibility to minimize CO2 emissions and waste of materials

Project Services



Quick, cost-efficient and minimal disruption installation

Complete management of the projects

- Project management
- Installation
- Commissioning and testing
- Integration and programming



Project Management

Turn drawing board
designs into a reality as
smoothly as possible



Installing your system

Right installations to
ensure performance
reliability far into the future



Integration and programming

Integration of lighting
systems with HVAC, IT
systems and programming
for PCK/Amplight/Dynalite.

Lighting **Academy**

Taking the **lead in lighting**

Philips Lighting Academy is a special initiative of Philips India Limited. It was set up in late 2011 to foster multi-level learning on lighting theory, design, innovation and application in the company's internal and external stakeholders.

With digitization transforming lighting technologies and forcing paradigm changes in the ways lighting had been perceived and transacted for years the world over, it had become imperative to refresh traditional lighting knowledge and acquire new knowledge on digital technologies.



Philips Lighting Academy brings simple, user-friendly e-learning, completely free, on its website on handpicked lighting subjects:

- Introduction to lighting theory and application
- Understanding LED technology
- Lamps – Incandescent, Halogen and Fluorescent
- Introduction to luminaires

“Winning Together” – a Philips Lighting Academy exclusive

“Winning together” is a learning program specially conceived and designed primarily for architects, designers and electrical consultants. It brings easy online learning on a wide and comprehensive array of lighting subjects, ranging from LED technology, lamps and luminaires to creative lighting, architectural lighting and sustainability. convenience.

“Winning Together” also brings an exclusive series of webinars by Indian and Global experts, designed and developed for a select audience on such topics as:

- Green Lighting Solutions
- Choosing your LED Products
- Standards and Lighting Design
- Intelligent Lighting System
- Light & Sustainability

The Academy’s training tools:

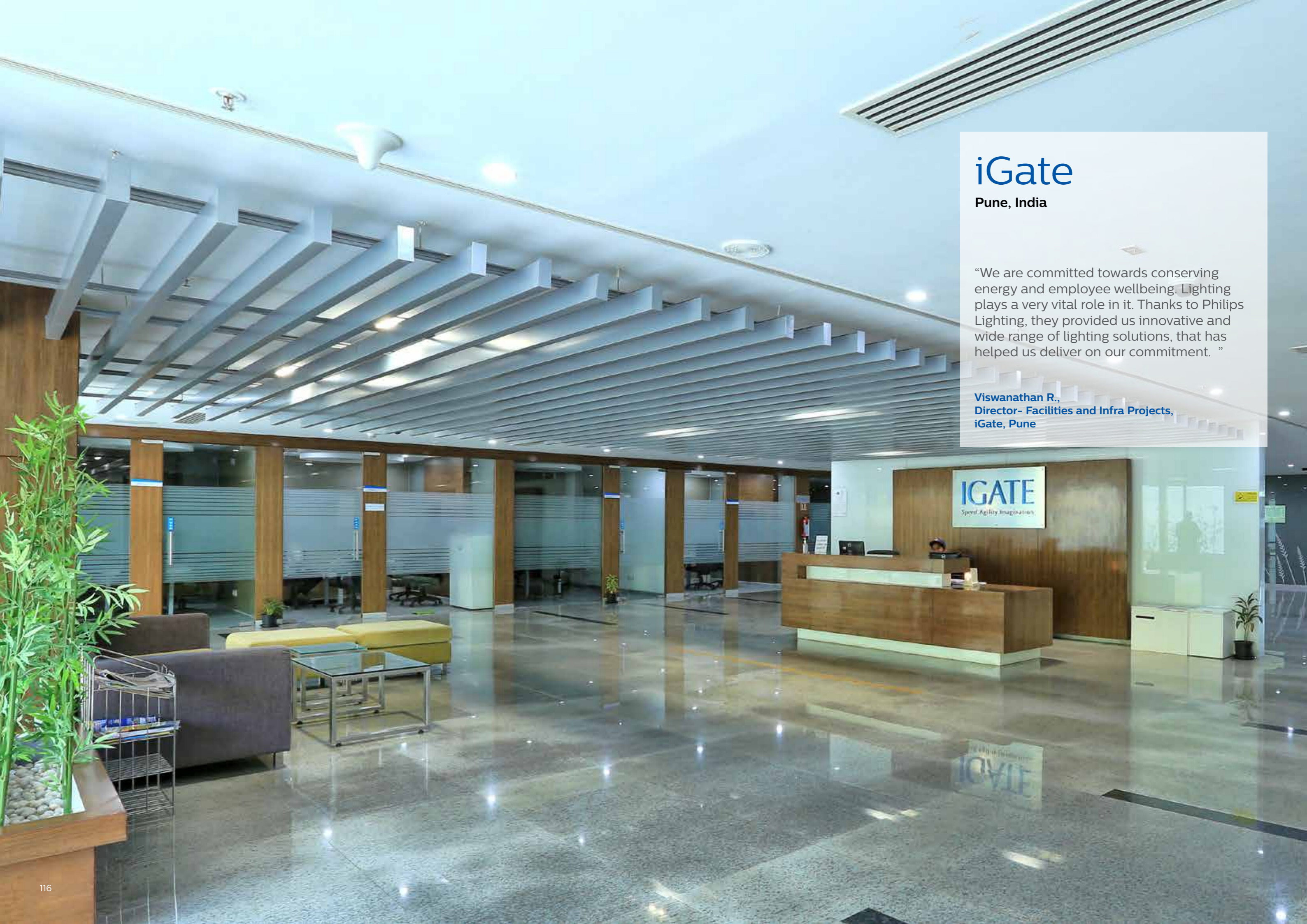
- Publications
- Online standalone learning modules
- Special online certifications by Philips Lighting Academy for standalone and short-term programs
- Webinars/ webcasts/ e-classrooms
- Exclusive live classroom sessions – a huge library of recorded lectures and webinars

Learning from Philips Lighting Academy is easy, affordable and fun. To know us better, visit us at <http://www.lighting.philips.co.in/education/lighting-academy-india.html> or write to us at LiteAcademy.India@philips.com

Customer **Testimonials**

Table of Contents

Case Study	Pg
iGate, Pune, India	116
State Bank of India, Agra, India	118
The Edge, Amsterdam, The Netherlands	120
Waterpark Place, Toronto, Canada	122

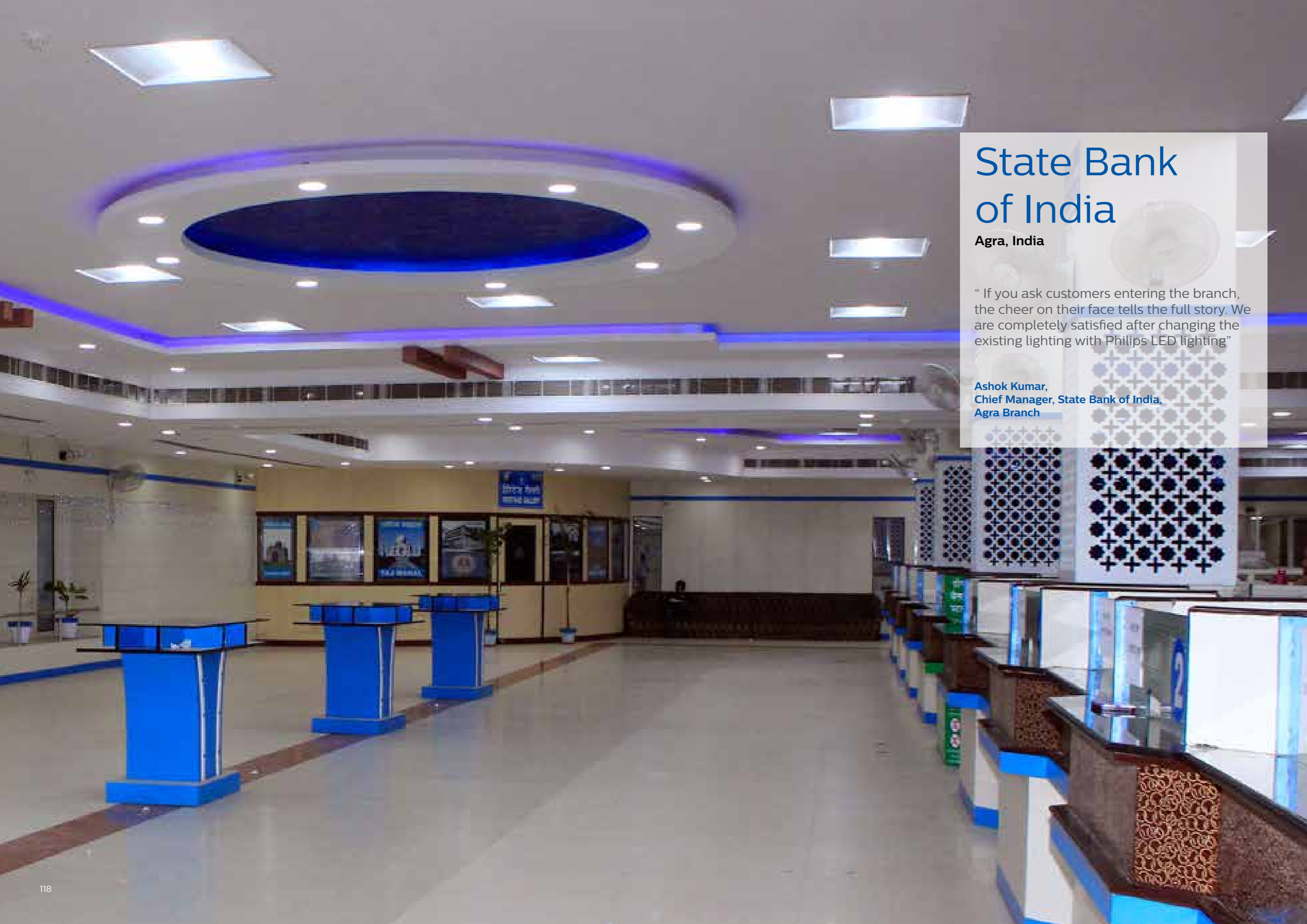


iGate

Pune, India

“We are committed towards conserving energy and employee wellbeing. Lighting plays a very vital role in it. Thanks to Philips Lighting, they provided us innovative and wide range of lighting solutions, that has helped us deliver on our commitment. ”

Viswanathan R.,
Director- Facilities and Infra Projects,
iGate, Pune



State Bank of India

Agra, India

“ If you ask customers entering the branch, the cheer on their face tells the full story. We are completely satisfied after changing the existing lighting with Philips LED lighting”

Ashok Kumar,
Chief Manager, State Bank of India,
Agra Branch



The Edge

Amsterdam, The Netherlands

“Innovation is our highest priority and we want our employees to create a more intuitive, comfortable and productive environment. We also raise the bar in terms of data analysis, delivering new insight into the use of the office space. It shows how we can reduce CO2 emissions from buildings and create a more sustainable world.”

Erik Ubels, CIO Deloitte in the Netherlands



Waterpark Place

Toronto, Canada

“A pleasing workspace with personal control within it means we can attract and retain the best talent. Our system is the key element to attracting the next generation of workers.”

William MacGowan,
Director for Cisco's Smart+ Connected Real Estate

South

Philips Lighting India Ltd,
Sunny Side, #8/17, 3rd Floor, C
Block, Shafee Mohammed Road,
Greams Road, Chennai -600006
Tel :- 91 44 6650 1000
Fax :- 91 44 6650 1075
Email : lighting.india@philips.com

Philips Lighting India Ltd,
Philips Innovation Campus
Manyata Tech Park, Nagavara
Bengaluru-560045
Tel : 080-4189 0000
Fax :- 080 6692 9930
Email : lighting.india@philips.com

Philips Lighting India Ltd,
6-3-1109 / I / P/ 103, 3rd floor
Jewelawani Towers,
Rajbhavan Road,
Somajiguda, Hyderabad
Tel :- 040 6646 7676 / 4825
Fax :- 040 6678 7974
Email : lighting.india@philips.com

West

Philips Lighting India Ltd,
Boomerang, B2 Wing,
5th Floor, Unit No. 506,
Chandivali Farm Road,
Near Chandivali Studio,
Andheri (East), Mumbai 400072
Tel :- 91 22 6691 2000
Fax :- 91 22 6691 2389 / 66912398
Email : lighting.india@philips.com

Philips Lighting India Ltd,
602, Heritage Tower, 6th floor,
Behind Visnagar Co-op Bank,
Near Gujarat Vidyapith, Usmanpura,
Ahmedabad, Gujarat
Tel :- 91 79 2754 0708
Fax :- 91 79 2754 0666
Email : lighting.india@philips.com

East

Philips Lighting India Ltd,
7, Justice Chandra Madhab Road,
Kolkata 700 020
Tel : 91 33 2486 7621-24
Fax : 91 33 2486 8318
Email : lighting.india@philips.com

North

Philips Lighting India Ltd,
9th Floor, DLF - 9B, DLF Cyber City
DLF Phase 3, Gurgaon 122002
Tel :- 91 124 460 6000
Fax :- 91 124 460 6666
Email : lighting.india@philips.com

Philips Lighting India Ltd,
8th floor, DLF - 9B, DLF Cyber City
DLF phase 3, Gurgaon 122002
Tel :- 91 124 460 6000
Fax :- 91 124 460 6666

Contact customer service
executive at
1800 102 2929 (Toll free)
1860 180 1111, 0124- 4291111
“Standard call rates apply”

Philips Lighting Bangladesh Ltd,
House No. 22, Road: 113/A
Chaklader House, Gulshan-2
Dhaka-1212

Philips Lighting Lanka Pvt. Ltd,
6th floor, East Trade Tower,
World Trade Center, Colombo-1
Tel :- 94 11 233 4362/ 233 4312

For more information contact us at lighting.india@philips.com or call at **1800 102 2929**
www.lighting.philips.co.in

